

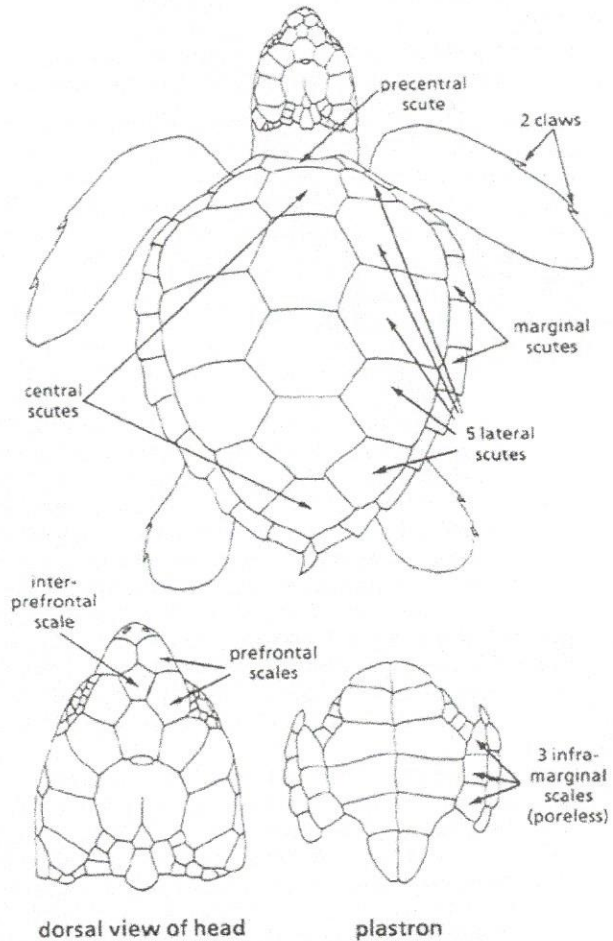
## IDENTIFICATION

### SPECIES DESCRIPTIONS

#### LOGGERHEAD SEA TURTLE

##### *(Caretta caretta)*

Distributed throughout the world. Primary nesting populations: Oman, Southeastern USA, Brazil, Australia, and Cabo Verde. The loggerhead is reddish brown in color, has 5 pairs of lateral plates with the first touching the nuchal scute, and 3 inframarginal scutes without any pores. The head is large relative to the body, the upper jaw is pointed and *not* hooked, and there are usually more than two prefrontal scutes between the eyes. Adult loggerheads in the southeastern United States have an average curved carapace length (CCL) of 98.6 cm (38.6 in.) and an average weight of 113 kg (250 lb.). The most common loggerheads found in North Carolina are immature turtles with a CCL between 51 - 76 cm (20 - 30 in.). **Juveniles that have a CCL of less than 45 cm (18 in.) are rare in North Carolina or anywhere along the US Atlantic coast.** Hatchlings are dark brown above and light brown or tan beneath. They typically have 3 dorsal keels and 2 plastral keels. The CCL at hatching is approximately 4.1 - 4.8 cm (1.6 - 1.9 in.).



#### LOGGERHEAD TRACK/CRAWL CHARACTERISTICS:

Track Width: 65-100 cm (26-40 in.).

Type of Track: Moderately deeply cut with alternating (asymmetrical) diagonal marks made by front flippers.

Preferred Beach Type: Extensive mainland beaches and barrier islands; moderately steep beach profile preferred.

Average clutch size: 120 eggs

Egg diameter: 4 cm (1.5 in.).